

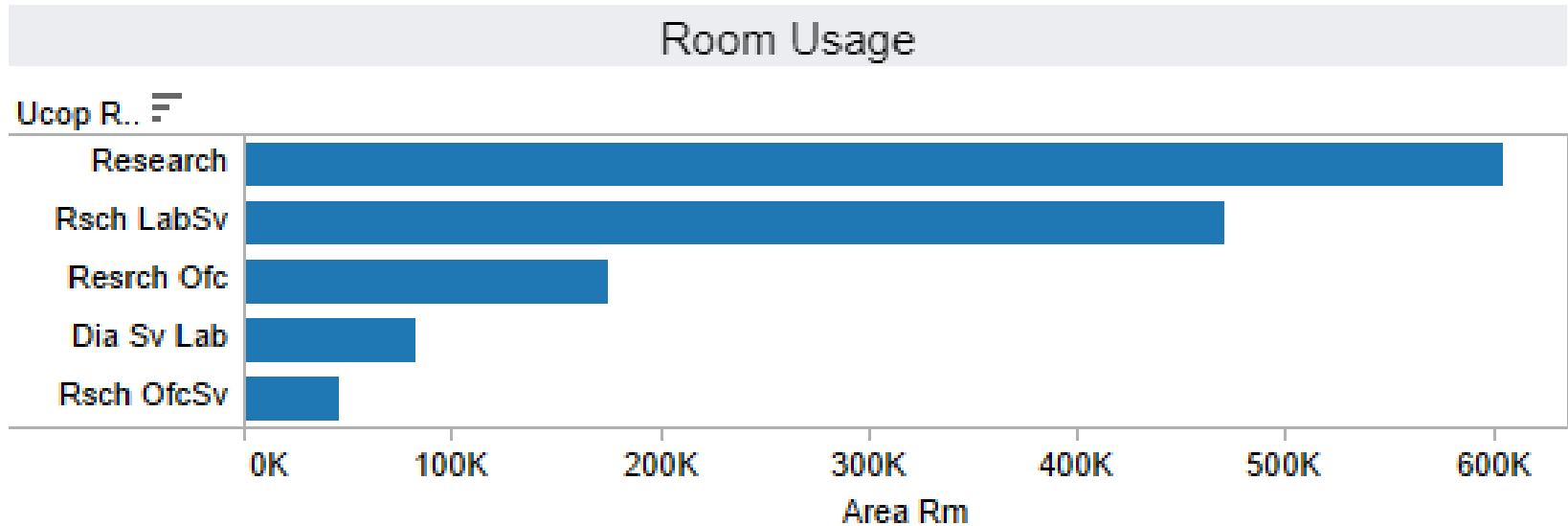
# Lab Services Initiative

Facilities Assessment 2019

Adam Schnirel, Chris Gonzales, & Paul Landry



# The Focus on Research Support



- Research space accounts for over 1M sq. ft. at UCSF
- Critical building operation systems ensure reliability, safety, and research controls for researches and experiments
- Opportunities to improve support services for lab and research space

# Assessment Focus

- Freezer Monitoring
- Seismic Bracing
- Emergency Power (red plug) access



# *Lab Services Initiative*

---

Your lab has been **assessed**  
by Facilities Services



*Questions? Call the Customer Service Center*

*415.476.2021*

**UCSF** Facilities  
Campus Life Services

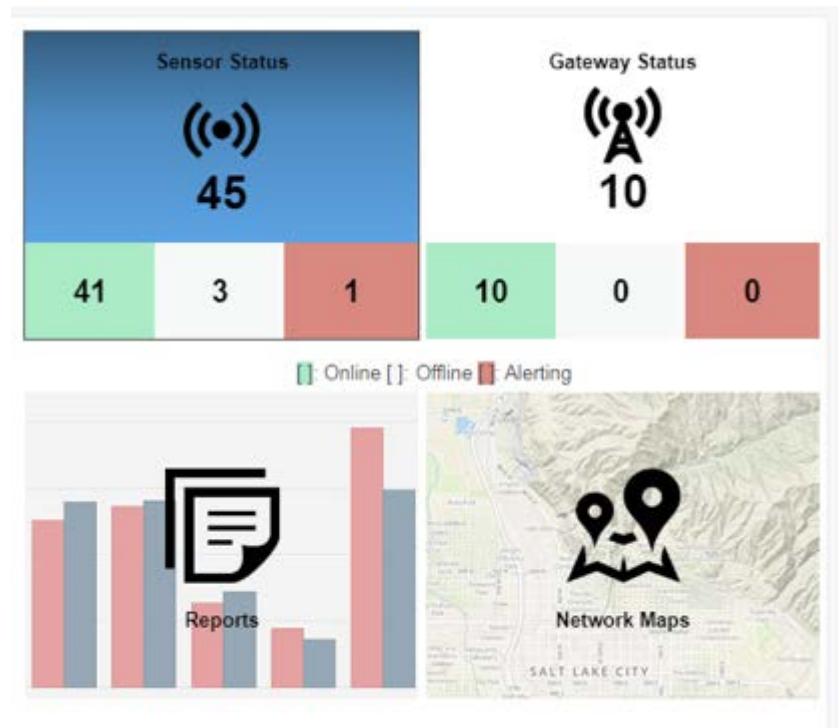
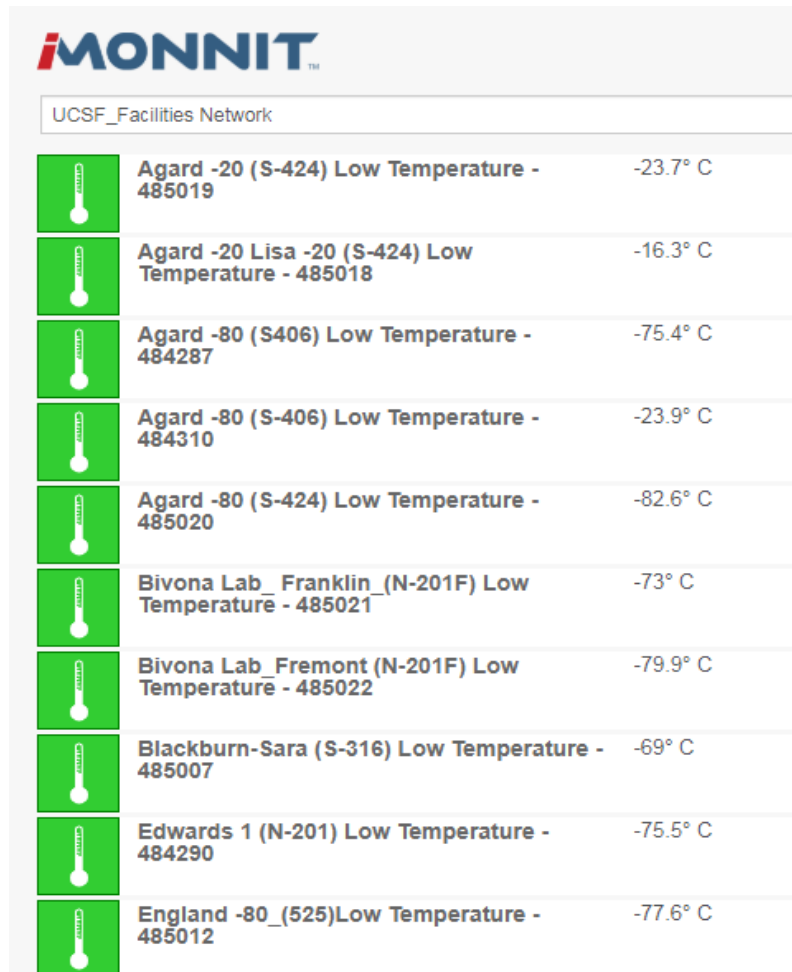
# Freezer Monitoring

- Freezer temperature monitoring
  - 50% of freezers are not monitored at UCSF
  - Research samples are worth Millions \$\$\$
  - Simple monitoring can save years of work
  - Facilities offers a monitoring system and is testing new applications.





# Freezer Monitoring



- Monitoring 41 Freezers
- Testing 2 software & 1 hardware application
- 16 labs participating

# Seismic Bracing



- Bracing is now FREE for common lab equipment!!!
- What else do we need to say!



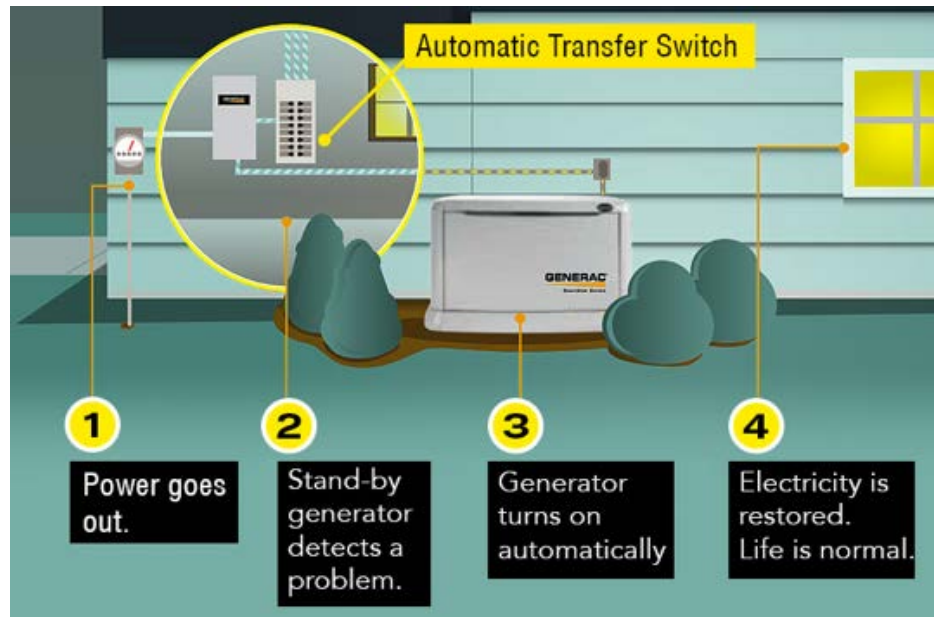
# Common Lab Equipment

- DI water units
- Bio-safety Cabinet
- Pyxis Units
- Incubator
- Gas tanks
- Freezers/refrigerators



# Emergency Power

- Do you know what's connected to e-power?
- The assessment will review electrical plans with existing red plugs in your labs.
- We will also denote spaces that might need more e-power capacity.



# FS Commitment to Research Going Forward

1. Continue to find ways to make lab research support easy to understand, cost effective, and efficient
2. Communicate more effectively with labs and researchers about lab infrastructure, projects requirements, and FS services
3. Continue to advocate for standard details and building permits for labs: gas lines, electrical/low voltage, bracing, etc.



**UCSF**

University of California  
San Francisco