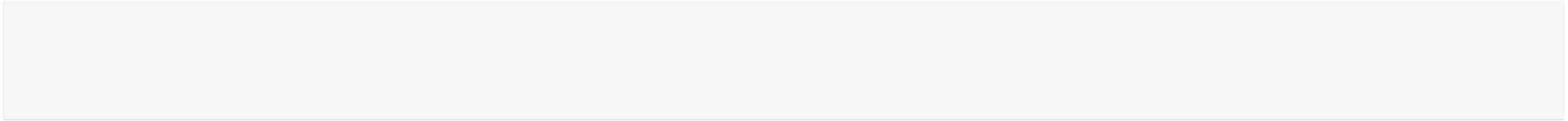


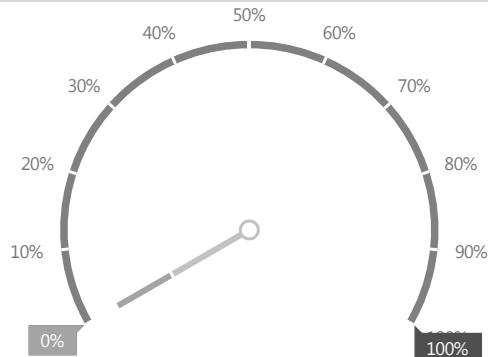
Campus Life Services Goals FY 17-18



Transportation

↳ Select new pre-tax vendor.

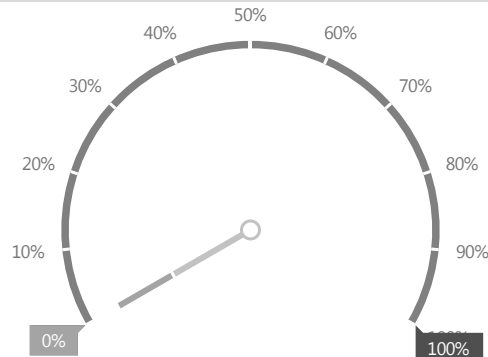
Assigned To: Erick Villalobos



Transportation

↳ Deploy New Electric Bus Inventory (Building Your Dreams, BYD) and complete all driver training

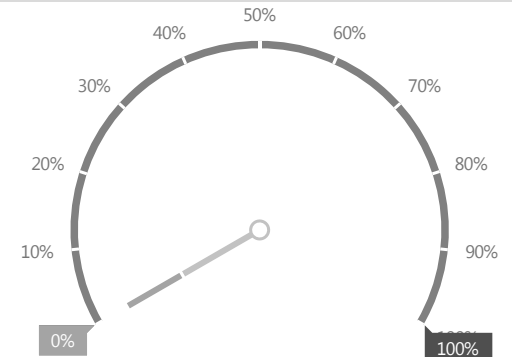
Assigned To: Erick Villalobos



Transportation

↳ Participate in APTA (American Public Transit Association) audit/peer review for shuttle driver safety.

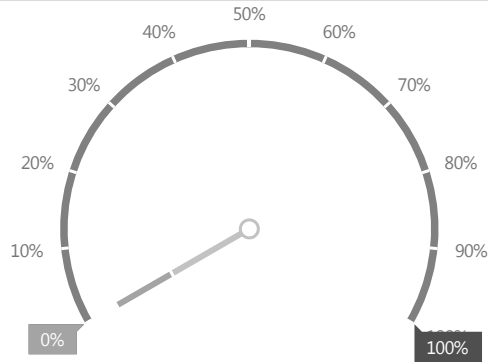
Assigned To: Erick Villalobos



Transportation

↳ Select parking guidance system vendor and deploy system at Mission Bay and Parnassus.

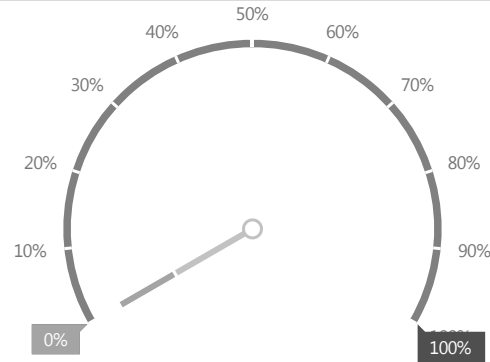
Assigned To: Erick Villalobos



Transportation

↳ Develop mobile applications for parking, enforcement, and sales operations.

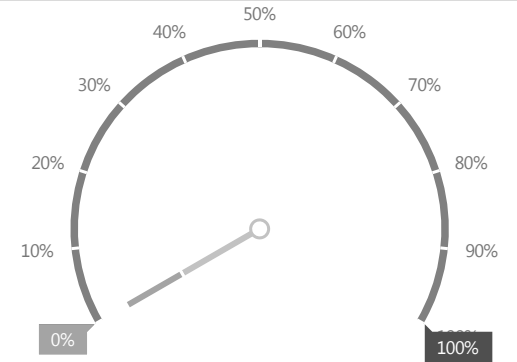
Assigned To: David Schachman



Facilities

↳ Implement UCSF Physical Environment Renewal in Two High Impact Spaces (SON Mezz & Gen Hall)

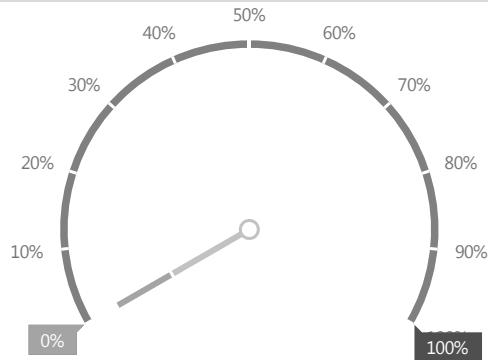
Assigned To: Cesar Sanchez



Facilities

↳ Make Progress on UCSF Carbon Neutrality Goal by Achieving FY17/18 Strategic Plan Tasks

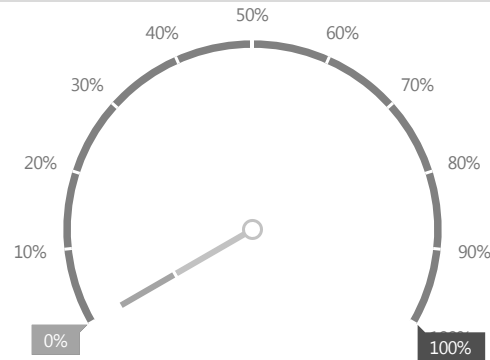
Assigned To: Jodi Soboll



Facilities

↳ Improve Campus Infrastructure Reliability Through Improved Preventive Maintenance

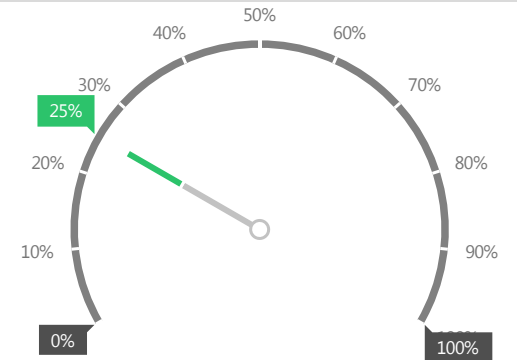
Assigned To: Steve Najera



Facilities

↳ Improve Seismic Bracing Program Affordability and Ease of Use

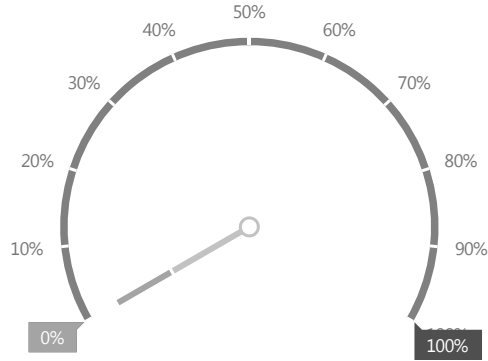
Assigned To: Paul Landry



Facilities

↳ Establish Governance and Strategic Management of the Access Control Program

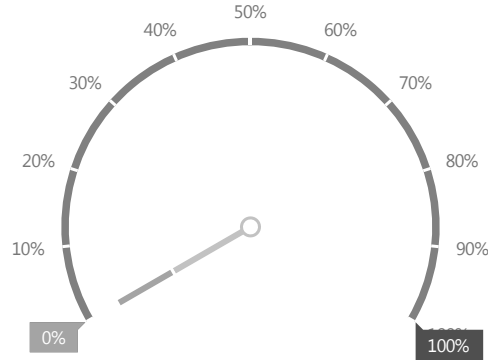
Assigned To: Steve Najera



Facilities

↳ Develop the Facilities Services Organizational Culture to Support Growth and Transition

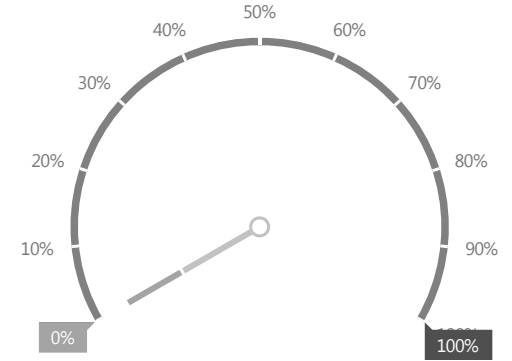
Assigned To: Steve Najera



Facilities

↳ Improve Customer Service By Leveraging Department-Level Building Contacts

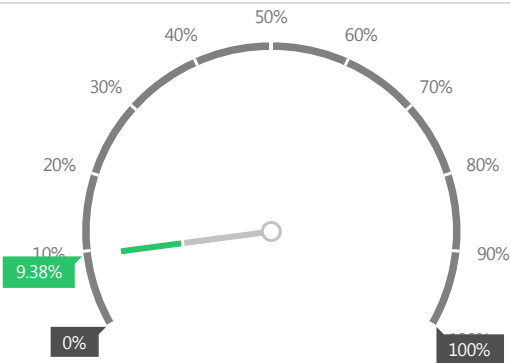
Assigned To: Cesar Sanchez



Facilities

↳ Prepare to Improve Parnassus Campus Facilities by Estimating Cost of Problem & Modeling New Approaches

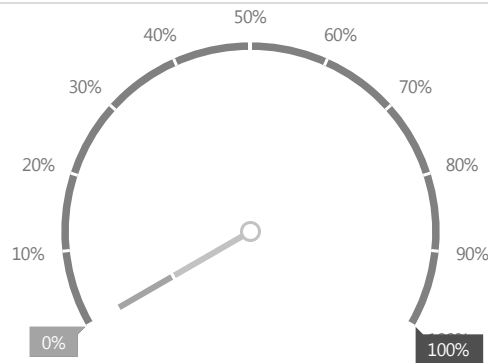
Assigned To: Jon Giacomi



Family Services

↳ Study options and draft a plan to replace Laurel Heights child care center, given the sale/decanting of Laurel Heights.

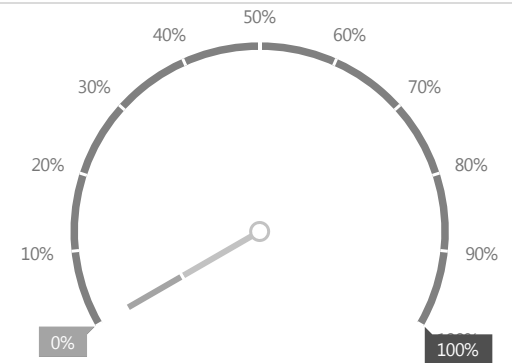
Assigned To: Suzie Kirrane



Family Services

↳ Enhance UCSF Child Care Centers emergency infrastructure to continue to deliver a strong track record of safety

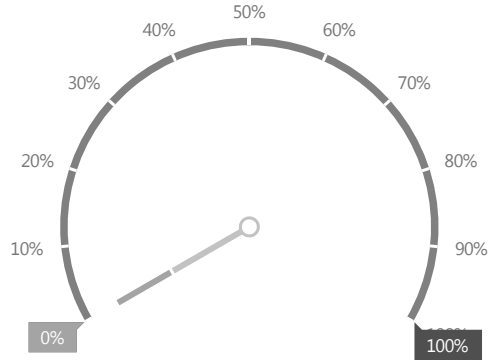
Assigned To: Suzie Kirrane



Arts & Events

↳ Implement UCSF Volunteers Program within Campus Life Services

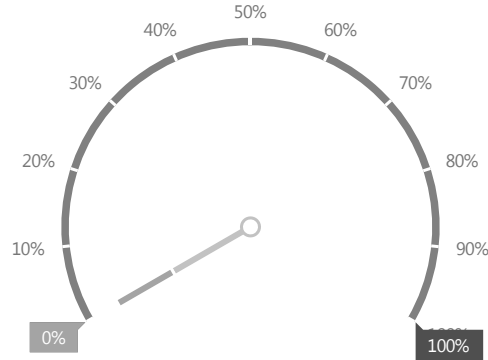
Assigned To: Jen Mannix



Wellness

↳ UCSF Recognize

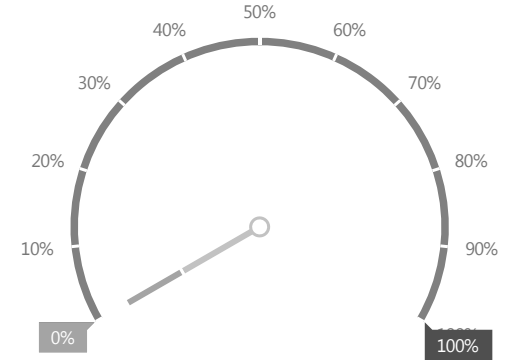
Assigned To: Leeane Jensen



FitRec

↳ Implement a membership experience feedback tool to improve member retention.

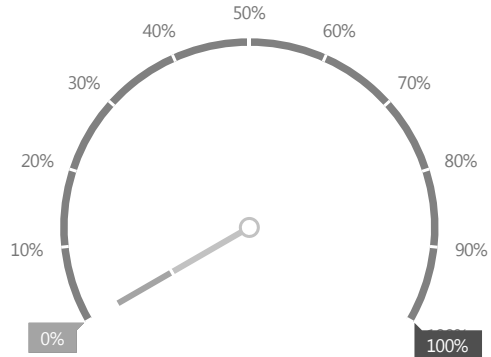
Assigned To: Gail Mametsuka



Housing

↳ Continue to Improve Safety at all Housing Properties

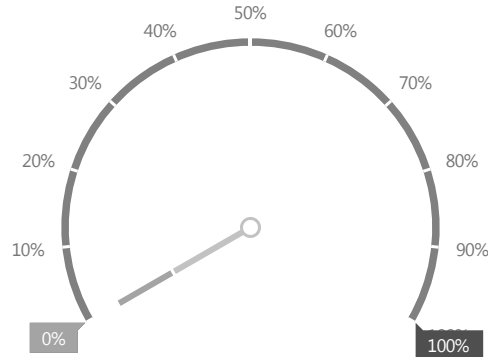
Assigned To: Leslie Santos



Housing

↳ Minimize rent increases and reduce unnecessary cost to Tenants

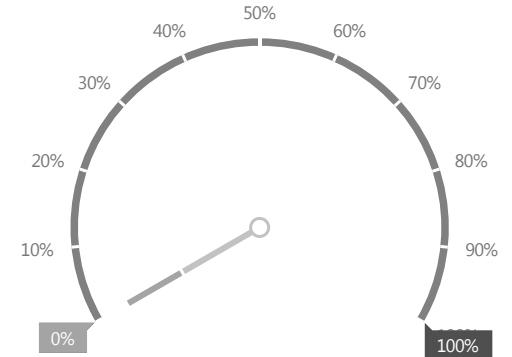
Assigned To: Leslie Santos



Housing

↳ Prepare to open Minnesota Housing

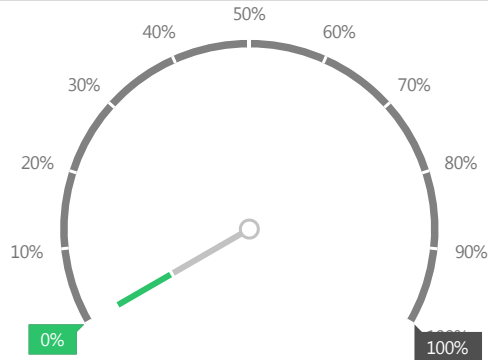
Assigned To: Leslie Santos



Housing

↳ Finalize faculty campus-housing plan

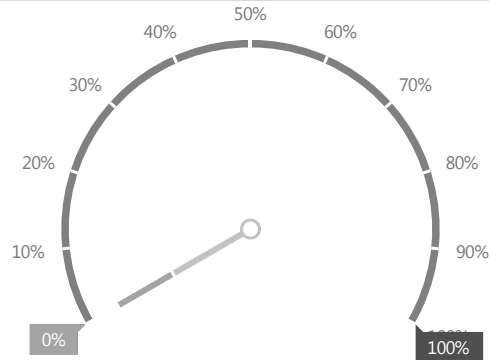
Assigned To: Leslie Santos



Retail

↳ Minnesota Street Housing - Develop a customized retail package to ensure "right-fit" corner market retail operator is selected and can open when (or soon after) the building opens.

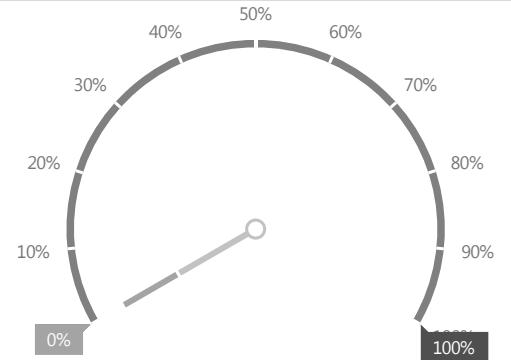
Assigned To: Cindy Yoxsimer



Retail

↳ Block 33 - Develop a customized retail package to ensure "right-fit" Café retail operator is selected and can open when (or soon after) the building opens.

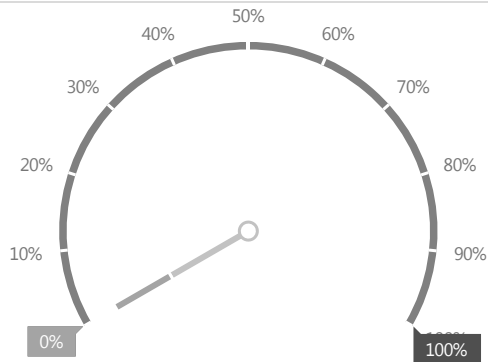
Assigned To: Cindy Yoxsimer



Retail

↳ Block 23A - Develop a customized retail package to ensure “right-fit” Café Kiosk operator is selected and can open when (or soon after) the building opens.

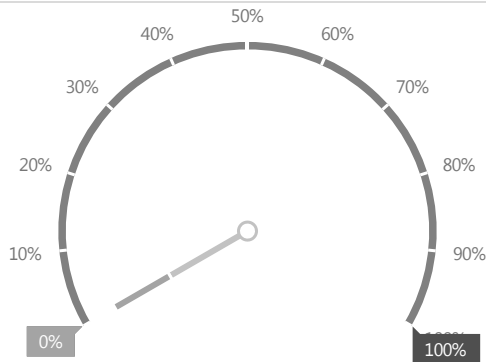
Assigned To: Cindy Yoxsimer



Retail

↳ New vendor MU 132 (currently Panda Express) - Develop a customized retail package to ensure “right-fit” retail operator is selected to meet the university’s healthy food initiative goals.

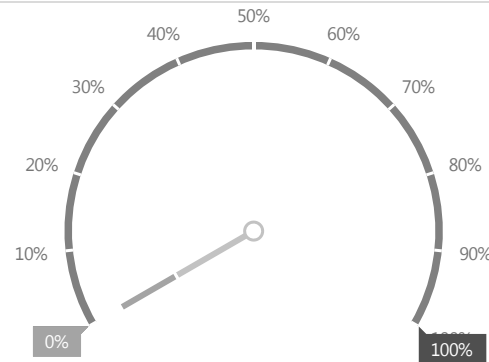
Assigned To: Cindy Yoxsimer



Retail

↳ Establish Mission Bay Conference Center/Pub next generation business model

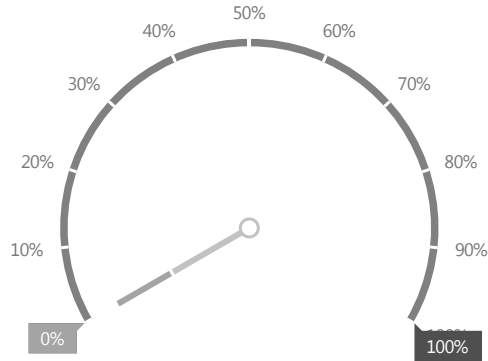
Assigned To: Cindy Yoxsimer



Retail

↳ Lead the process to find the best conferencing solution for the university.

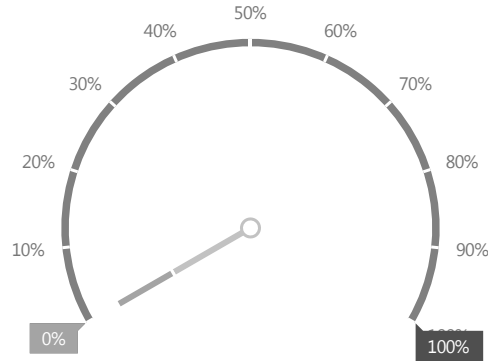
Assigned To: Cindy Yoxsimer



Documents & Media

↳ Develop a comprehensive UCSF Campus Print Policy to engage the campus with cost saving opportunities, green reporting goals, and an enhanced customer experience.

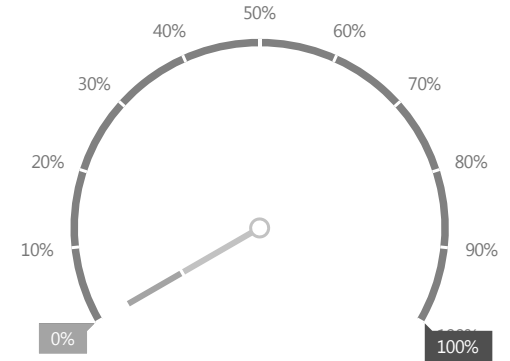
Assigned To: Cindy Yoxsimer



Documents & Media

↳ Expand Managed Print Services to non-enrolled departments at UCSF campus locations (excluding UCSF Health).

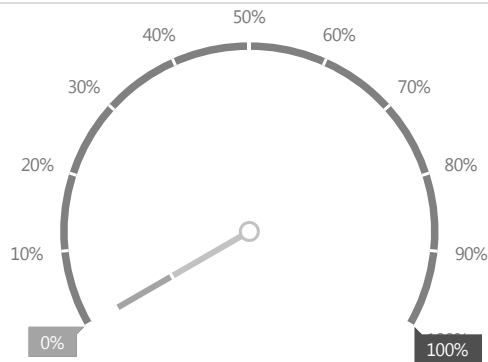
Assigned To: Cindy Yoxsimer



Business Systems Development

↳ Create a connected digital campus at UCSF

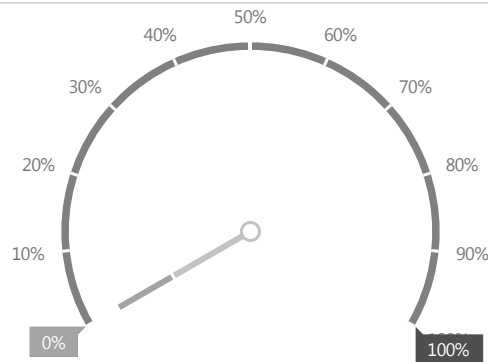
Assigned To: Cindy Yoxsimer



Business Systems Development

↳ Implement an Enterprise-wide PCI compliant Ecommerce solution.

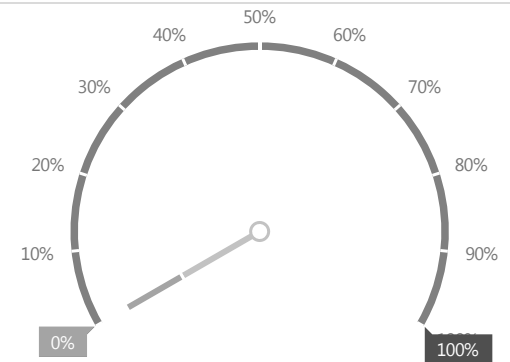
Assigned To: Cindy Yoxsimer



Information Systems

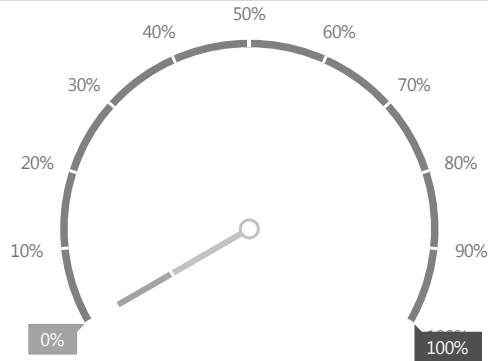
↳ Maintain IT Data Security and Compliance

Assigned To: Dan Freeman



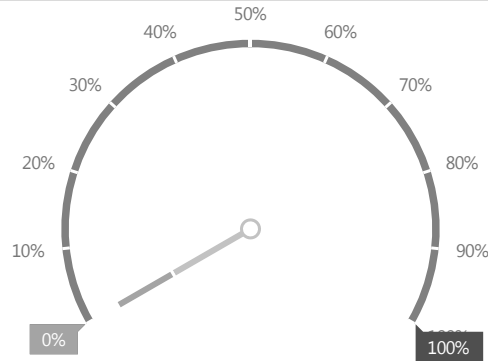
↳ Support Demand and new uses for Digital Signage fleet/infrastructure, and complete program assessment

Assigned To: Dan Freeman



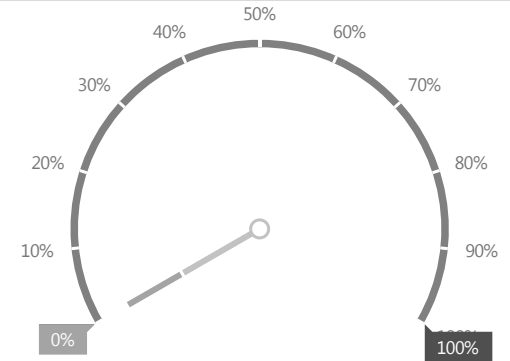
↳ Launch Mentorship Program

Assigned To: Cathleen Stuard



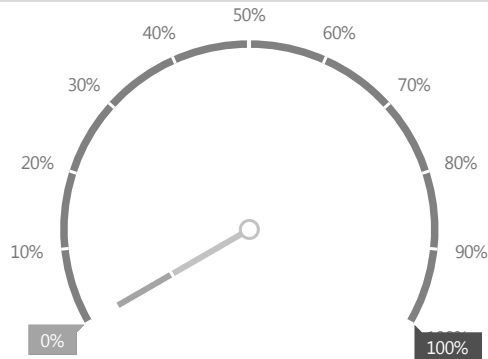
↳ Energize and Refocus CLS Safety Committee

Assigned To: Cathleen Stuard



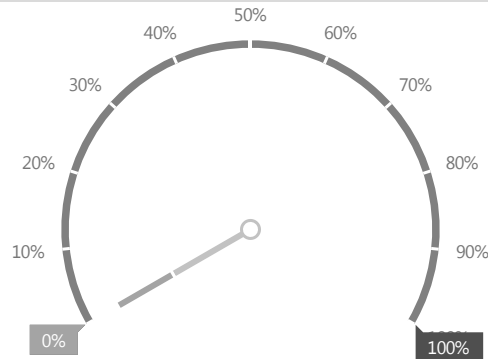
↳ Implement a CLS Compliance Training Calendar

Assigned To: Cathleen Stuard



↳ Explore & Scope Customer-Specific Marketing/Communications Efforts

Assigned To: Monica Mapa



↳ Design and lead the Construction Impacts Communications Campaign.

Assigned To: Clare Shinnerl

